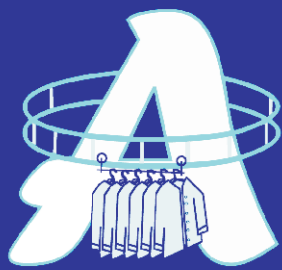


# 06-07 Year in Review



## 2006-2007 Brief Overview Of Major Projects

- 250M<sup>2</sup> double level mezzanine floor manufactured & installed at **Blue Circle Laverton.**
- 300M<sup>2</sup> mezzanine floor manufactured & installed at **Just Jeans Altona.**
- Manufacture & supply of aluminum picking trolleys with onboard scanning to **Just Jeans Group.**
- Supply and installation of railing system for garment handling at the new **Myer D.C. Eastern Creek Sydney.**
- Supply of new and relocation of existing rack and rail system to new warehouse for **Metalicus.**
- Supply and installation of new rack and rail system for **Gazel Apparel.**
- Extension of existing mezzanine floor and supply of additional rack and rail for **Breakaway International.**
- Supply and installation of new 485M<sup>2</sup> mezzanine floor and relocation of rack and rail system for **Pelaco.**

## More Space For Everyone

As warehousing costs continue to rise at an astonishing rate, interest within the manufacturing and warehousing industries for storing more product within the same space has been increasing.

There is usually two solutions to this problem, the first is to look at the overall warehousing procedures and handling processes and the second is the supply of additional space.

With regard to the first scenario Appcon Engineering Pty. Ltd. can provide free and objective review of a company's warehousing procedures and handling processes and recommend or supply the company with a number of practical solutions to help overcome existing warehousing issues that will save time and money. The second problem can be easily solved by installing a mezzanine floor.

A mezzanine floor can be constructed to any size



**Double Level Mezzanine Floor Installed at Blue Circle.**

from a small corner in a warehouse to the entire warehouse's existing floor space that will effectively double the usable space within the building. Mezzanine floors can also be designed and constructed to suit a customer's specific storage and weight loading requirements. A mezzanine floor in most cases will pay for itself within 2-3 years based on the cost of additional warehousing

space alone. These savings significantly outweigh the costs incurred to relocate premises, use a third party provider or the costs of running an offsite storage facility. Six pallet access gates were installed to allow pallet access to both levels. The gate is simple to operate with one hand and has a locking feature to prevent opening when not in operation or during unloading from the floor.

## Forever Moving On

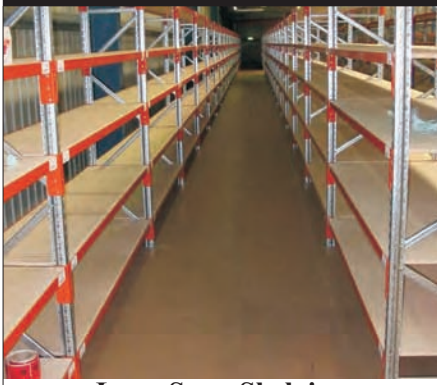
Appcon produces one of the most durable rail trolleys for use with all rail systems. The trolleys use precision extended inner race ball bearings that are assembled into precision machined steel wheels. All of the components used on Appcon trolleys are fully inspected prior to being assembled.

At only \$34.25 each + GST Appcon rail trolleys are the best value for money trolleys on the market. Appcon has designed a neat nesting storage unit for empty rail trolleys. The unit can hold up to 70 empty trolleys and is very easy to manoeuvre.



**Appcon Rail Trolleys On Trolley Storage Unit.**

# Appcon Floors Companies Storage Requirements



**Long Span Shelving**



**Mezzanine Floor Pallet Gates**



**Shelving and Service Rail**



**CIS Container System**



**Pallet Racking**

Appcon Engineering has recently completed two major mezzanine floor installations along with several smaller floor installations. One of the major mezzanine floors was installed at Blue Circle in Laverton and the other installed at Just Jeans in

Altona. The mezzanine floor at Blue Circle is approximately 1250M<sup>2</sup> and is a double level construction using common support columns. It has spans in excess of 8.4 meters thus providing access for fork lifts and ample storage area



**Mezzanine Floor under construction at Just Jeans Altona**

underneath the mezzanine floor. The installation of the floor included lighting and fire sprinkler systems as were specified. The second mezzanine floor was

installed at Just Jeans in Altona and was approximately 1300M<sup>2</sup>. The existing rack & rail system was relocated to the top of the new mezzanine floor in two stages to help minimize the disruption to the operating capacity of the warehouse during the installation of the mezzanine floor. The structural spans were 4.75x4.2 meters to allow the space underneath to be used for sorting of palletized goods. Appcon endeavors to work with our clients to minimize disruption to the operating ability of an organization during any type of installation.

## Shipping For Profit

Appcon Engineering has developed a collapsible (CIS) modular railing system that fits inside international shipping containers and is also suitable for use inside local transport trucks. Some of the advantages of the CIS system are, reduced loading and unloading times, reduced OH&S issues with manual unloading,, reduced

container and truck waiting times and the system helps to minimize expensive pressing and reprocessing costs. The system is erected inside a standard 20 or 40 foot container or truck and takes less than 10 minutes with 2 men to assemble with no tools required due to the incorporated latching pins. The system is coupled to the existing railing

system and trolleys (skids) with the garments for transportation rolled into the container ready to ship. Once at the destination the system is coupled to the railing system and the whole process is reversed with trolleys removed and system disassembled in less time than it took to assemble.

## Five Years & Still Focussed

As Appcon enters its sixth year of dedicated service to the fashion & warehousing industries, it has found its self a niche market with people who care about value for money and quality of service. Appcon takes its commitment to its customers very seriously, whether a customer is after a quote, advice, service or just some friendly

information the staff at Appcon are willing and eager to help with any customer requirements. As others in the industry become complacent with the idea of service to the customer, Appcon consider this our primary focus. At Appcon we are here to help



**Rack, Rail & Shelving Solutions.**

you improve your business productivity and growth potential with cost effective handling & storage solutions.